

CWWorks

Installation Guide
FREE version

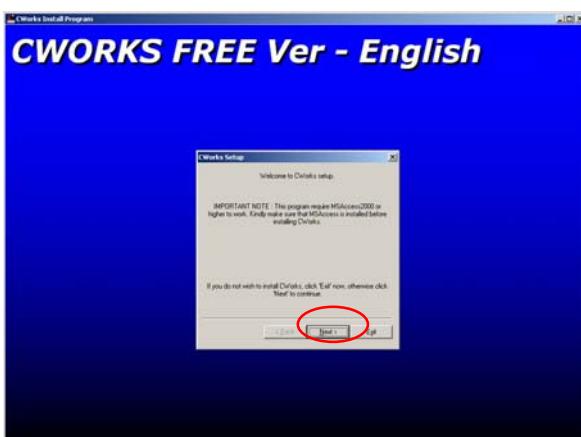
System Requirements

- The computer must have Microsoft Office 200x Professional (MSAccess and MExcel) pre-installed.
- After installation, if user receive a message "Unreconized database format". This means that your computer is running on a lower version of MSAccess.

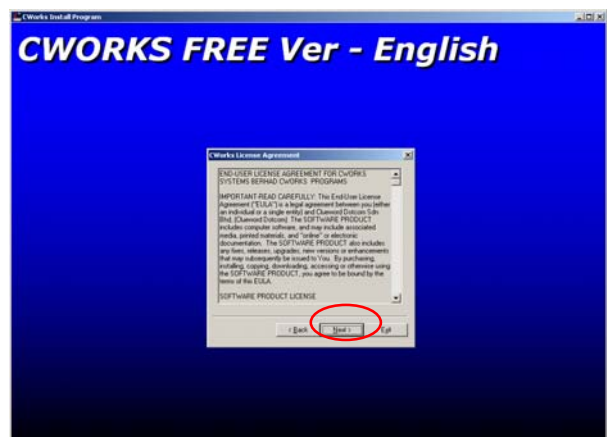
How to install CWorks?

- After downloading any of the below files: -
 - "cw_free_eng.zip" (English)
 - "cw_free_pmx.zip" (Spanish)
 - "cw_free_mal.zip" (Malay)
 - "cw_free_chi.zip" (Chinese)
- Extract the ZIP file and double click on the EXE file.
- Please follow the below steps

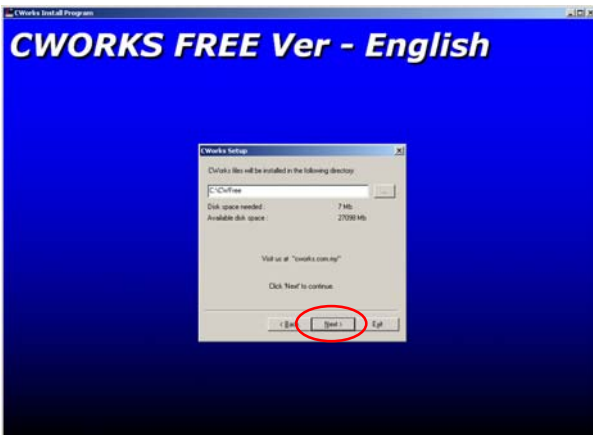
1



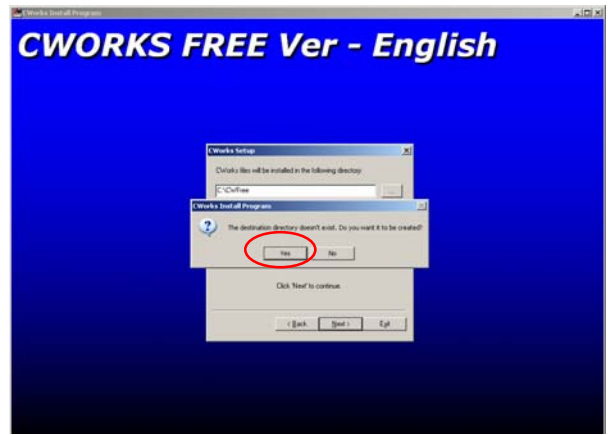
2



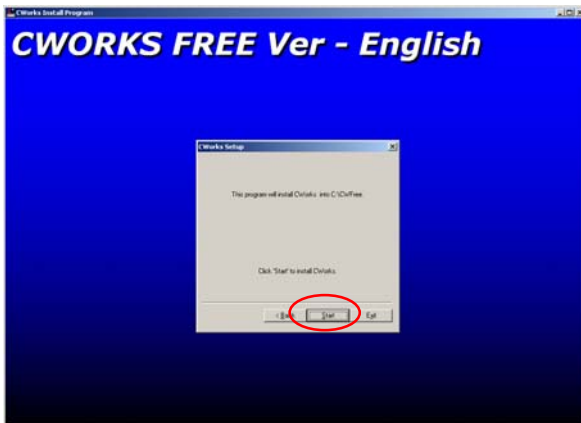
3



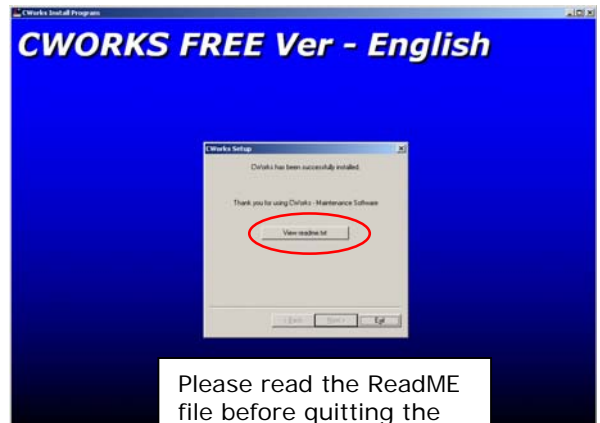
4



5



6

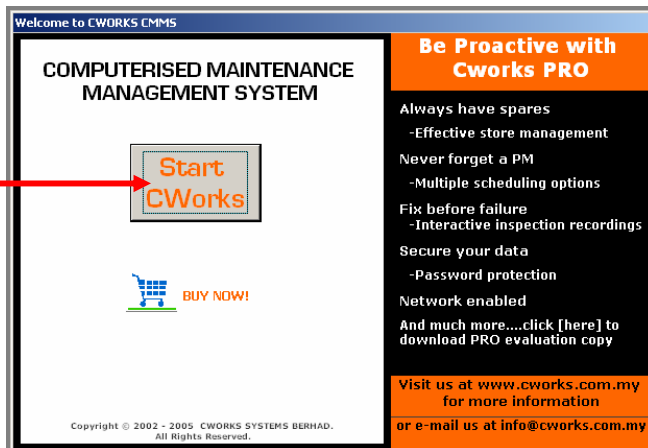


Please read the ReadME file before quitting the setup program

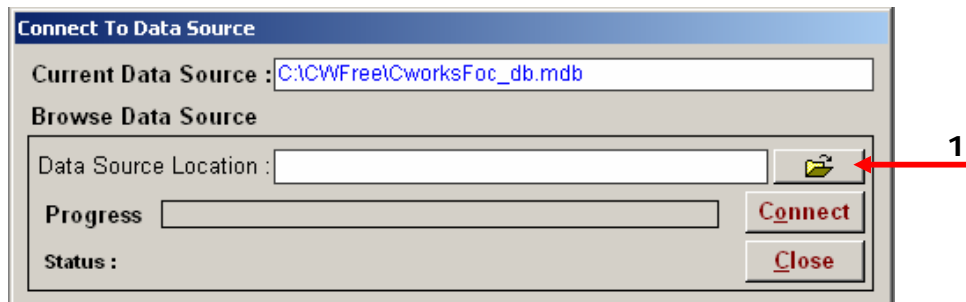
- The below icon will appear on the desktop



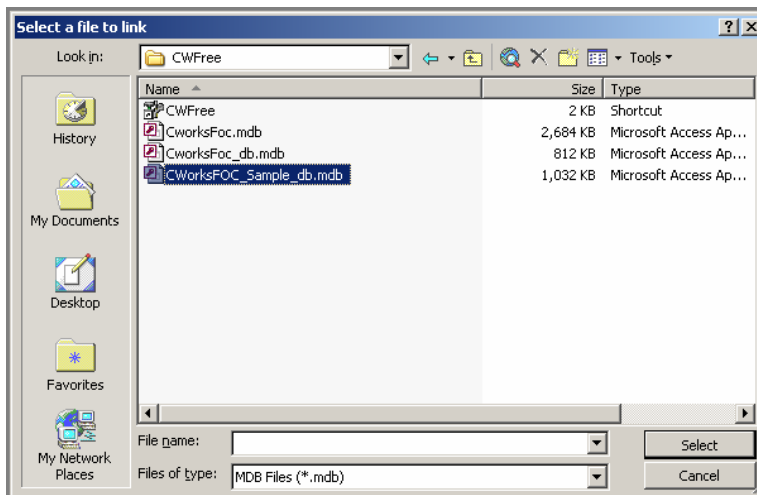
- Double click on the icon to start the program



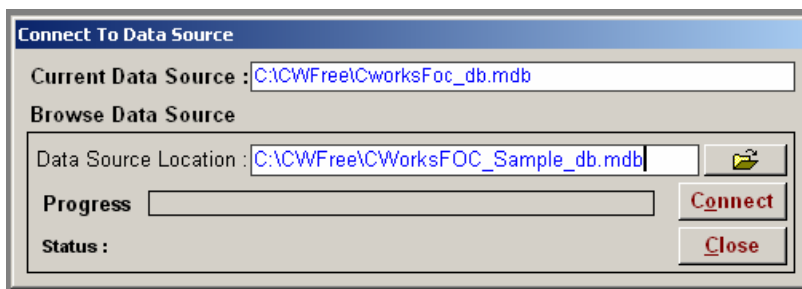
- Click on "Start CWorks"
- By default the system will automatically connect to CWorks empty database.
- We have provided two (2) databases in this package. One has NO data (Filename: CworksFoc_db.mdb)and one has sample data (Filename: CWorksFOC_Sample_db.mdb).
- To change the database connection to the sample database click on "FILE ->DataLink" at menu bar (top left of the screen).
- The below menu will pop-up.



- To change click on (1)



- Find for CWFree directory in your C drive.
- Select file name : CWorksFOC_Sample_db and click SELECT button.
- Data source now should be "C:\CWFree\CWorksFOC_Sample_db.mdb". See below.



- Click "CONNECT" button to apply the new connection.
- A message will appear to confirm that the connection is successful done.

